

# COVID-19 Screening Decision Tree

Student or staff member complains of COVID-19 or MIS-C symptoms.

Call 9-1-1 (EMS) if any the following symptoms are exhibited

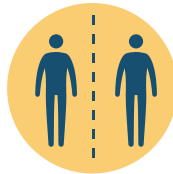
- +Difficulty or Rapid Breathing
- +Chest Pain
- +Pulse O<sub>2</sub> <92%
- +New Confusion
- +Bluish Lips/Face
- +Unable to wake or stay awake

NO



Mask student or staff member

Place student in isolation area away from others



Staff should go home immediately and consult a healthcare provider.

## Questions to ask:

1. When did symptoms appear?
2. Recent COVID-19 exposure?
3. Signs and Symptoms (*see list on back*)
4. Temp > 100.4 or school board policy if lower
5. +Pulse O<sub>2</sub> <92%

Verbal, Visual, & Physical concerns out of range?

NO

Allow to rest for 10 minutes

Improving? NO

YES

Back to Class

YES

- +Isolate
- +Send home ASAP
- +Contact Medical Provider
- +Contact Public Health

FOLLOW-UP WITH

- +Student/family
- +Health Services
- +Administrator

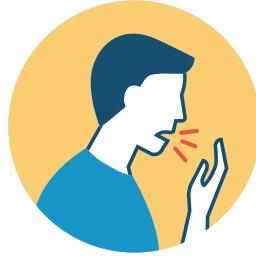
# Symptoms of COVID-19



CONGESTION  
OR RUNNY NOSE



FEVER 100.4\*  
\*or school board policy  
if threshold is lower



COUGH



SHORTNESS OF BREATH OR  
DIFFICULTY BREATHING



DIARRHEA



NAUSEA



SORE THROAT



MUSCLE PAIN



CHILLS



NEW LOSS OF TASTE  
OR SMELL

*\*Usually presents with more than one symptom.*

**Look for emergency warning signs\* for COVID-19. If someone is showing any of these signs, seek emergency medical care immediately**

\*Difficulty or rapid breathing

\*Persistent pain or pressure in the chest

\*New confusion

\*Inability to wake or stay awake

\*Bluish lips or fact

\*Stomach Pain

*\*This list is not all possible symptoms. Please call your medical provider for any other symptoms that are severe or concerning to you.*

**Call 911 or call ahead to your local emergency facility:  
Notify the operator that you are seeking care for someone who has  
or may have COVID-19.**

## Symptoms of MIS-C

\*Rash

\*Red Eyes

\*Cracked/Swollen Lips

\*Red/Swollen Tongue

\*Swelling Hands/Feet

\*Stomach Pain